

Fluid-o-Tech magnet drive gear pumps MG300 series



compatibility with a wide range of fluids. The housing of the pump and the internal metal parts are in AISI 316 L stainless steel while gears and bushings are available in Peek™, Ceramic Peek™ or PTFE™.

In operation the MG300 series pumps are noiseless, pulsation-free and capable of handling relatively high temperature liquids (up to 120 °C or 248 °F) with low coefficient of expansion. Operation at different pressures ranges is possible thanks to a choice of materials for the magnets.

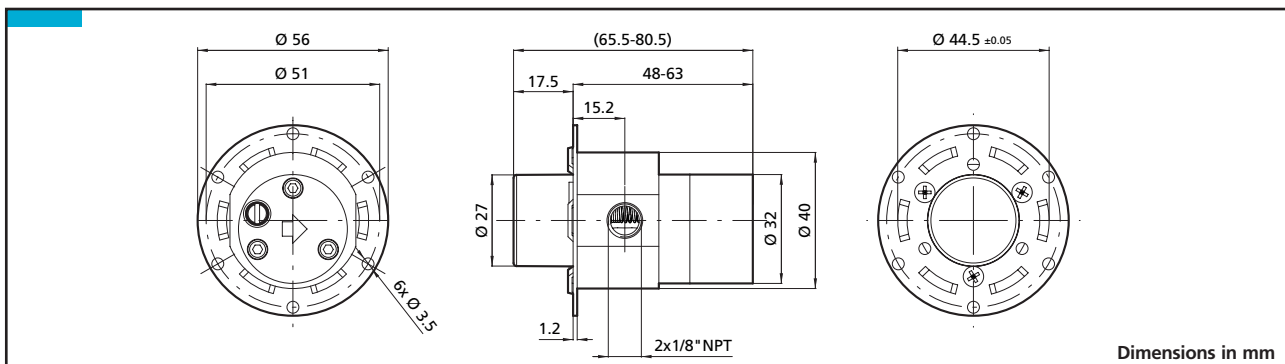


The MG300 series magnet drive gear pumps are compact precision performance pumps for a wide range of specialized applications. Thanks to the improved design, the MG300 series grant a more accurate and uniform delivery regardless of the fluid temperature. The seal less design with the magnetic transmission of the rotation is guarantee of a leak proof product. Static seals are available in PTFE™/NBR/VITON®/ EPDM/SILICON, in order to guarantee the highest chemical

All pumps are available with:

- 1/8" GAS or NPT
- customized ports upon request
- NSF listing (PTFE™ or Silicon seals)

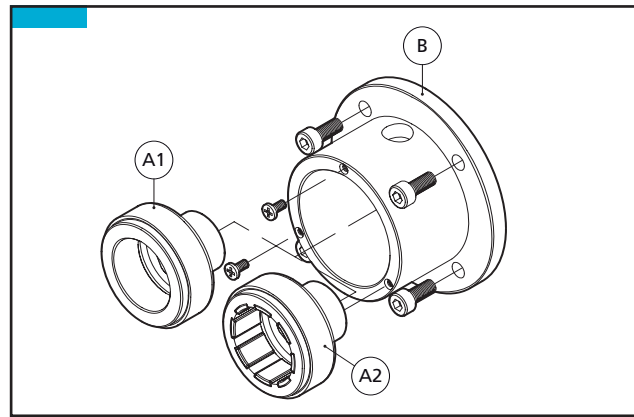
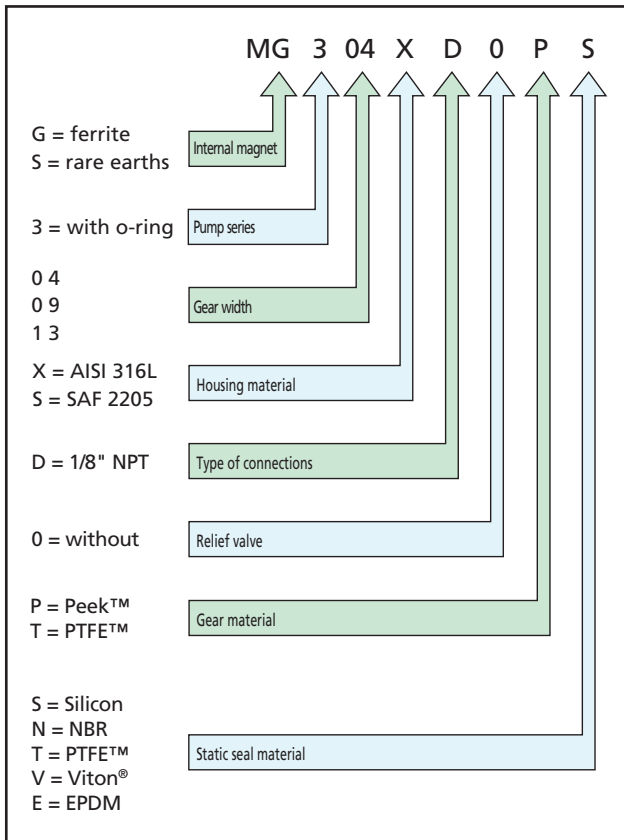
Composition materials		Technical information	
Housing	Gears	Temperature range	Max system pressure
SS	PTFE™	-45 to +50 °C / -49 to +122 °F	20 bar/290 psi
SS	Peek™	-45 to +120 °C / -49 to +248 °F	20 bar/290 psi



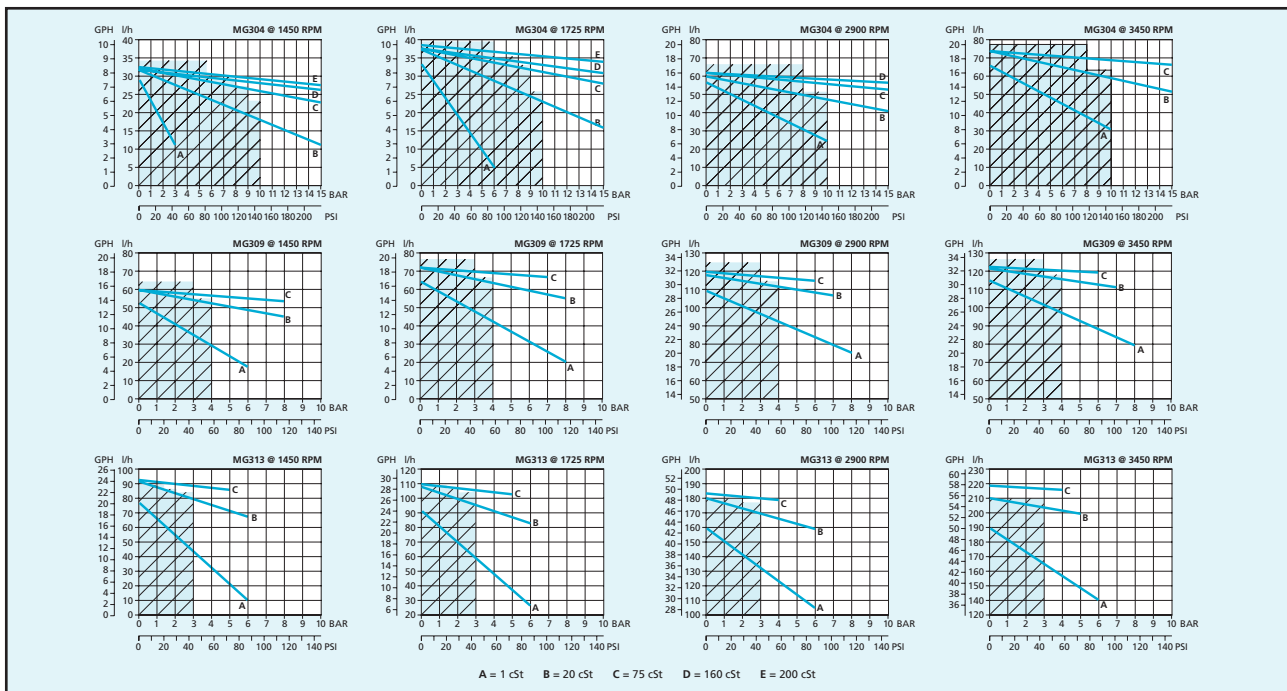
Main applications

- Medical and surgical equipment
- Hemodialysis apparatus
- Laser apparatus
- Lubrication
- Ink-jet printing systems
- Cooling systems
- Laboratory instrumentation
- Water purification and ultra-filtration
- Sampling
- Food processing equipment

Fluid-o-Tech magnet drive gear pumps MG300 series



Pos.	Description	Features	Code
A1	Ferrite driving magnet	6 mm bore	MGAFO55
		9 mm bore	MGAFO65
		11 mm bore	MGAFO95
A2	Rare earths driving magnet	6 mm bore	MGASO55
		9 mm bore	MGASO65
		11 mm bore	MGASO95
A1 + B	Adapter kit with ferrite driving magnet	M48 motor	MGBF425
		M56 motor	MGBF565
		M63 motor	MGBF635
A2 + B	Adapter kit with rare earths driving magnet	M48 motor	MGBS425
		M56 motor	MGBS565
		M63 motor	MGBS635



Note: Performance beyond the broken line zone are reached with the rare earths magnets. Characteristics with water at 20 °C (68 °F) and without relief valve, max vacuum 724 mmHg. Use filter before pump inlet not larger than 10 micron. Pump weight: 510 g (1,12 Lbs). Temperature requirements different from ambient temperature must be mentioned on the order. Different materials are available upon request.

Fluid-o-Tech reserves the right to alter the specifications indicated in this catalogue at any time and without prior notice.

MG3 – 03/09 Ed.

Fluid-o-Tech srl
 Via Leonardo da Vinci, 40
 20094 Corsico, Milano, Italy
 Tel. +39 02 8917071
 Fax +39 02 89170799

Fluid-o-Tech Int'l Inc.
 161 Atwater St.,
 Plantsville CT (USA) 06479
 Tel. +1 (860) 276-9270
 Fax +1 (860) 620-0193

Fluid-o-Tech Int'l Inc. Japan
 203, 2-17-19, Ebara, Shinagawa
 Tokyo 142-0063, Japan
 Tel. +81 (0) (3) 3783-9660
 Fax +81 (0) (3) 3783-9661

Fluid-o-Tech Asia (Beijing) Co., Ltd
 Jingwei Industrial Zone,
 Beifang Huairou, Beijing, 101400, PRC
 Tel. +86 (0) (10) 61684650
 Fax +86 (0) (10) 61684651