

# Fluid-o-Tech magnet drive gear pumps MKCS08S-MKCS11S DC pump/motor units



316L or SAF 2205. The gears are available in PTFE™ or Peek™. The driving magnet is available in ferrite or in rare earths, capable to drive the pump at high pressure.

The quality of the materials of the assembled components allows handling of fluids with temperatures up to 120 °C (248 °F).

The coupling with the MKCS08S-MKCS11S DC units designed for heavy duty, provides a reliable and noiseless operation in a compact size package.

The pole-to-pole alignment of the two magnets provides the driving motion to the pump. Decoupling will occur when the pump load exceeds the maximum coupling torque provided by the alignment of the two magnets.

The MK series pumps are designed to complete the existing MG200 series with improved performances in terms of flow rate, pressure, capability to handle high viscosity fluids and a wider offer of materials to suit most applications, from the food to the industrial and chemical markets.

The housing of the pump and the internal metal parts are available in AISI 303, AISI

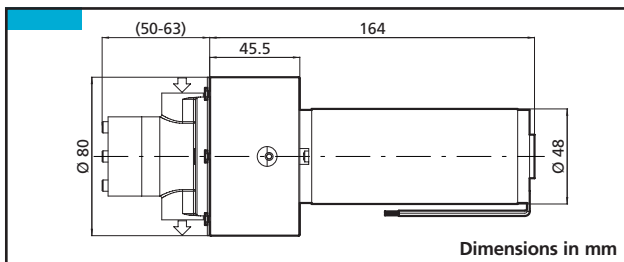


- 1/4" GAS or NPT ports

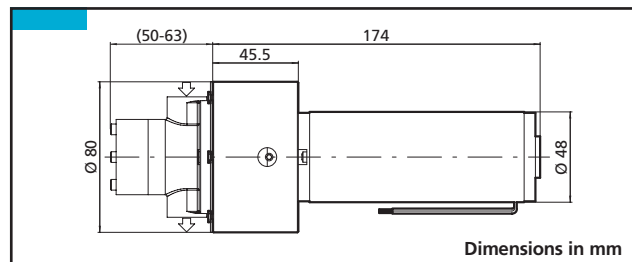
Temperature range:

- PTFE™ -45 to +50 °C/-49 to +122 °F
- Peek™ -45 to +120 °C/-49 to +248 °F
- Max system pressure: 20 bar/290 psi
- Relief valve available for MK200 series only
- NSF listed pumps available for potable water

## MKCS08S



## MKCS11S



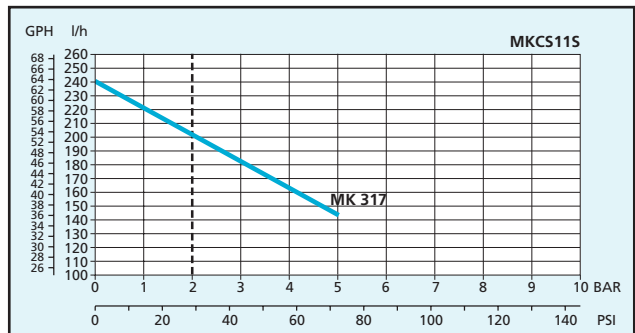
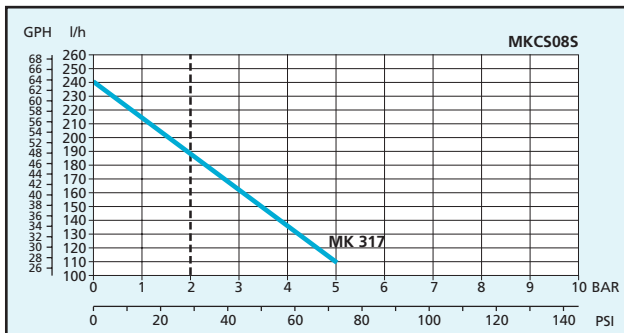
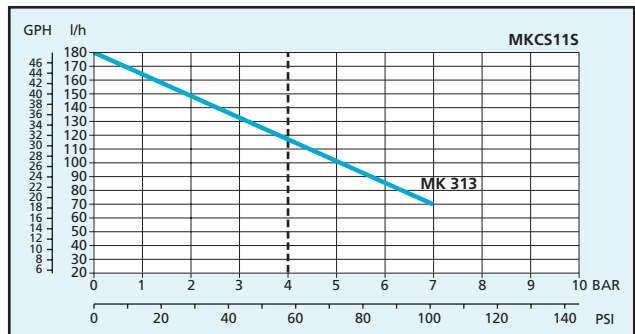
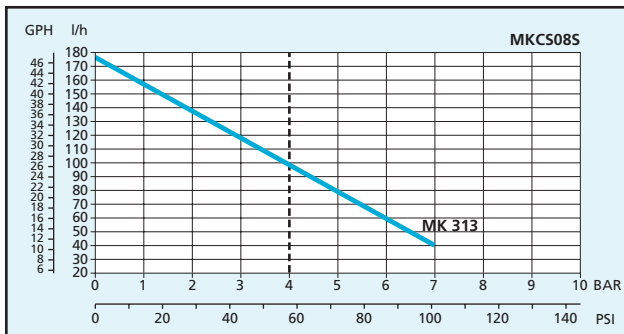
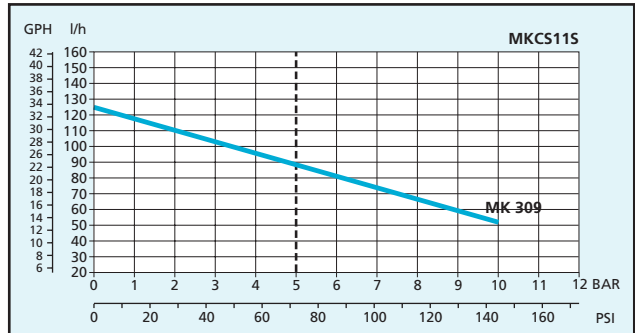
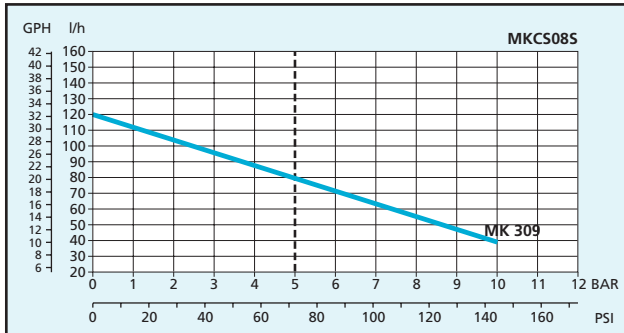
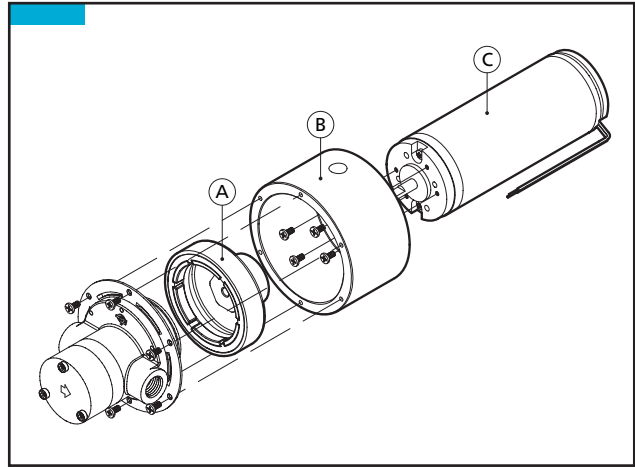
### Main applications

- |                                  |   |                             |
|----------------------------------|---|-----------------------------|
| • Medical and surgical equipment | • Ink-jet printing systems                | • Sampling                  |
| • Hemodialysis apparatus         | • Cooling systems                         | • Food processing equipment |
| • Laser apparatus                | • Laboratory instrumentation              |                             |
| • Lubrication                    | • Water purification and ultra-filtration |                             |

# Fluid-o-Tech magnet drive gear pumps MKCS08S-MKCS11S DC pump/motor units

Pos.	Description	Features	Code
A	Driving magnet	For 5 mm bore	MKAS05S
A+B	Complete adapter	For KAG M48x50 For KAG M48x60	
A+B+C	Complete motor assembly	12 V-32 W 24 V-49,5 W	MKCS08S MKCS11S

Drive type	MKCS08S	MKCS11S
Voltage (V)	12 DC	24 DC
Rated speed (rpm)	3.050	3.150
Current consumption (A)	3,4	2,6
Output power (W)	32	49,5
Weight (g)	910	980



Notes: Beyond the continuous duty (dotted) line a motor test is needed. Characteristics with water at 20 °C (68 °F) and without relief valve, max vacuum 724 mmHg. Use filter before pump inlet not larger than 10 microns. Pump weight: 2 Kg (4,4 Lbs). Temperature requirements different from ambient temperature must be mentioned on the order.

Fluid-o-Tech reserves the right to alter the specifications indicated in this catalogue at any time and without prior notice.

MKCS08S-11S – 03/09 Ed.

**Fluid-o-Tech srl**  
Via Leonardo da Vinci, 40  
20094 Corsico, Milano, Italy  
Tel. +39 02 8917071  
Fax +39 02 89170799

**Fluid-o-Tech Int'l Inc.**  
161 Atwater St.,  
Plantsville CT (USA) 06479  
Tel. +1 (860) 276-9270  
Fax +1 (860) 620-0193

**Fluid-o-Tech Int'l Inc. Japan**  
203, 2-17-19, Ebara, Shinagawa  
Tokyo 142-0063, Japan  
Tel. +81 (0) (3) 3783-9660  
Fax +81 (0) (3) 3783-9661

**Fluid-o-Tech Asia (Beijing) Co., Ltd**  
Jingwei Industrial Zone,  
Beifang Huairou, Beijing, 101400, PRC  
Tel. +86 (0) (10) 61684650  
Fax +86 (0) (10) 61684651