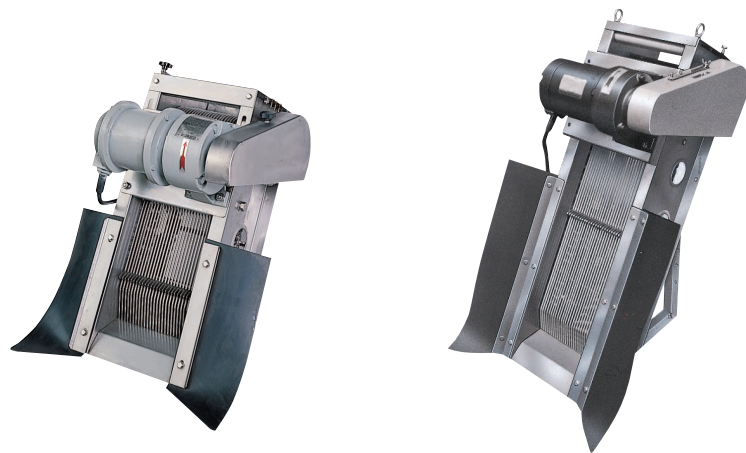


# KE KS

The KE/KS-series are front-type mechanical bar screens in which major parts are made of 304 stainless steel. The saw teeth on each rake travel between screen bars, which prevents foreign matters from lodging in the screen bars.

The KS-series has an eccentric roller mechanism that pulls the rake out of the screen bars at the solids releasing point and eliminates the jamming of solids.



## Applications

- Screening suspended solid from wastewater at small-scale wastewater facility

## Major Standard Specifications

Front Screen Type		Wastewater and Sewage	
Treating Fluid		Wastewater and Sewage	
Ambient Temperature		0 to 40°C	
Structure	Materials	Screen Bar	304 Stainless Steel
		Rake	304 Stainless Steel
		Chain and Sprocket	304 Stainless Steel
		Frame	304 Stainless Steel 430 Stainless Steel (KS-200Z only)
Phase		Three-phase	
Motor		Totally-enclosed (IP57) Geared Motor	

## Standard Specifications

### Fine Screens (Bar Spacing: 1~2.5mm, 5mm)

Fine screens with a bar spacing from 1mm to 5mm. Ideal to remove very small matter securely and efficiently.

Type	Model	Motor Output kW	Bar Spacing mm				Overall Height mm	Width of Water Way mm	Installation Angle	Weight kgs
			Capacity m <sup>3</sup> /h							
			1.0	2.0	2.5	5.0				
Front Screen Type	KE-200S	0.1	—	26	31	41	510	300 ~ 400	60°	32
	KE-200M	0.1	—	36	46	58	685	300 ~ 400	60°	38
	KE-200L	0.1	—	49	62	78	865	300 ~ 400	60°	42
	KS-200Z	0.1	16	26	31	41	520	330 ~ 400	60°	33
	KS-200Y	0.1	29	47	56	74	760	400 ~ 500	60°	49
	KS-300Y	0.1	43	70	84	110	760	500 ~ 600	60°	54
	KS-200S	0.1	17	28	31	47	800	330 ~ 400	45°	47
	KS-200M	0.1	25	41	48	70	920	330 ~ 400	45°	52
KS-200L	0.1	32	55	63	93	1050	330 ~ 400	45°	62	

### Coarse Screens (Bar Spacing: 10~50mm)

Coarse screens with a bar spacing of 10mm to 50mm. These screens are efficient when used before a fine screen.

Type	Model	Motor Output kW	Bar Spacing mm					Overall Height mm	Width of Water Way mm	Installation Angle	Weight kgs
			Capacity m <sup>3</sup> /h								
			10	20	30	40	50				
Front Screen Type	KS-200S	0.1	—	70	75	80	85	800	330 ~ 400	45°	47
	KS-200M	0.1	—	104	111	119	123	920	330 ~ 400	45°	52
	KS-200L	0.1	—	137	147	157	165	1050	330 ~ 400	45°	62

- Capacity in terms of the maximum amount of clean water.
- Consult if a screen is to be installed in a channel with width exceeding those listed on the table.
- When ordering, please specify the desired bar spacing value together with the necessary model name.

## Front Screen Type

